

T-bar safety

Familiarize yourself with using the lift beforehand and pay close attention to the following instructions

1

Look and load

Move up to the marked line
Look to the inside for the bar
Stay standing and hold on



Secure any loose items



Remove pole straps and hold the sticks in the hand that is away from the bar.

2

Stand and ride

Remain standing for the entire ride
Stay in track



Stay in track

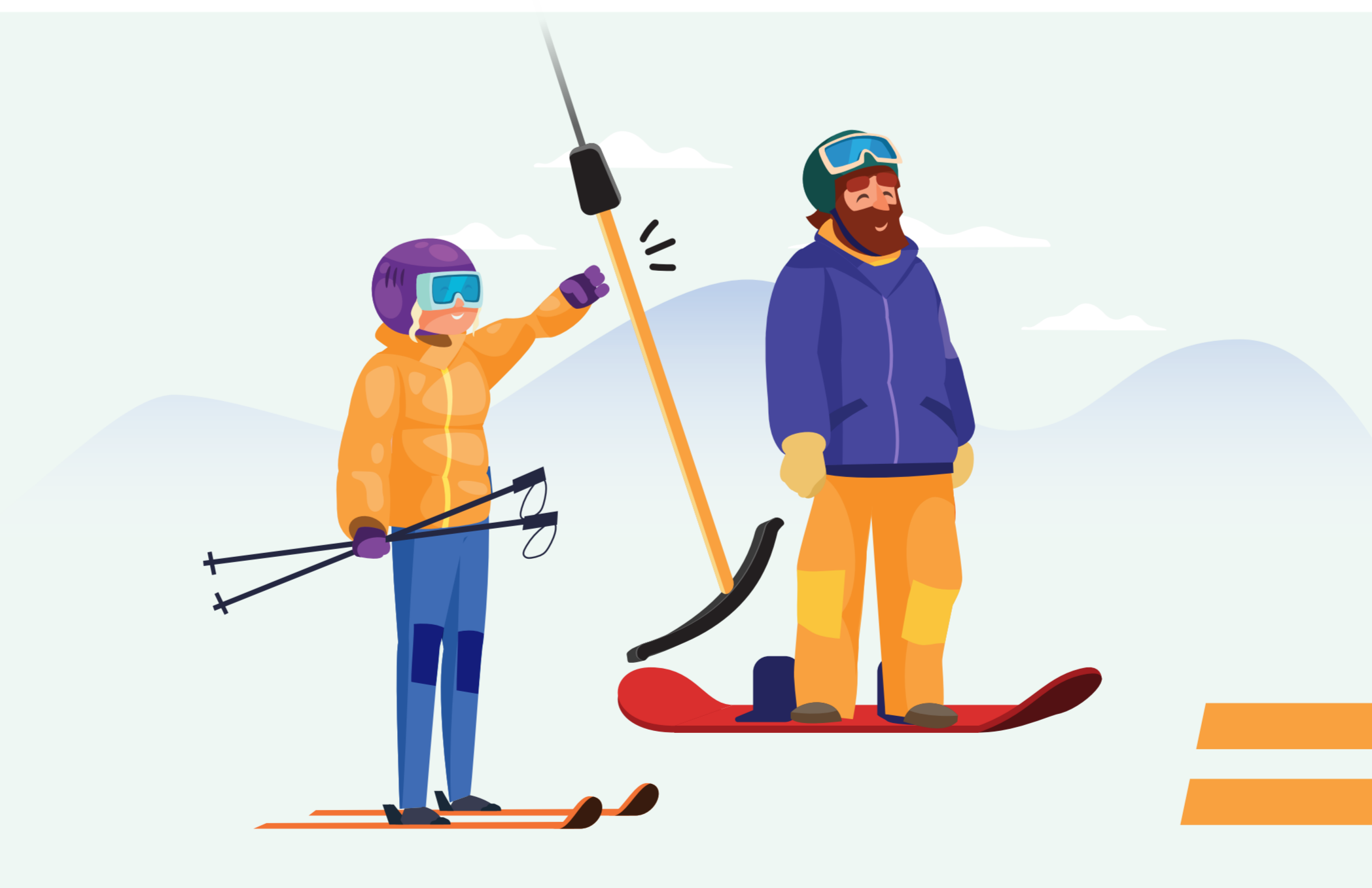


Fallen skier, clear track immediately

3

Unload and leave

When you approach the unloading area, unhook the bar
Release and clear area



Unload here



← Learn more here.